

SPEC SHEET + MEASUREMENTS

SPORT-TEK

Sport-Tek® Raglan Colorblock Pullover Hooded Sweatshirt. ST267

Product photo



Bright colorblocking on the hood and sleeves adds sport appeal, while the 2x2 rib knit details make it modern. Colorfastness and minimal shrinkage means this soft sweatshirt will keep its great look and fit.

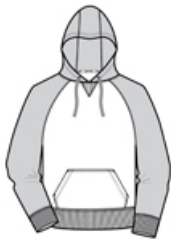
- 9-ounce, 65/35 ring spun combed cotton/poly fleece
- Shrink-resistant
- Fade-resistant
- Three-panel hood
- Dyed-to-match drawcords
- Twill-taped neck
- Rib knit V patch at neck
- 2x2 rib knit cuffs and hem with spandex
- Raglan sleeves
- Front pouch pocket

Please note: This product is transitioning from woven labels to tag-free labels. Your order may contain a combination of both labels.

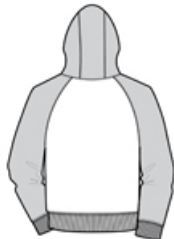
CARE INSTRUCTIONS

Machine wash cold. Wash with like colors. Do not bleach. Tumble dry low. Warm iron if necessary.

Sketches



front



back

SPEC SHEET + MEASUREMENTS

SPORT-TEK

Sport-Tek® Raglan Colorblock Pullover Hooded
Sweatshirt. ST267

PRODUCT MEASUREMENTS

	XS	S	M	L	XL	2XL	3XL	4XL
Chest	20 1/2	22	23 1/2	25	26 1/2	28	30	32
Sleeve Length from Center Back	34 3/4	35 1/2	36 1/4	37	37 3/4	38 1/2	39 1/4	40
Body Length at Back	27	28	29	30	31	32	32 1/2	33

Chest: Measured across the chest one inch below armhole when laid flat.

Sleeve Length from Center Back: Measure from Center Back neck to shoulder point to sleeve hem.

Body Length at Back: Measured from high point shoulder to finished hem at back.

SIZE CHARTS

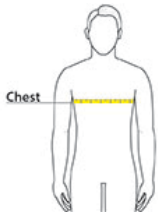
	XS	S	M	L	XL	2XL	3XL	4XL
Chest	32-34	35-37	38-40	41-43	44-46	47-49	50-53	54-57

SPEC SHEET + MEASUREMENTS



Sport-Tek® Raglan Colorblock Pullover Hooded
Sweatshirt. ST267

HOW TO MEASURE



CHEST
Measure under the arm and around the fullest part of the chest with arms down, keeping tape horizontal.

COLORS



Black/ Vintage
Heather
PMS BLACK
C



Forest Green/
Vintage
Heather
PMS 553 C



Maroon/
Vintage
Heather
PMS 504 C



True Navy/
Vintage
Heather
PMS 533 C



True Red/
Vintage
Heather
PMS 186 C



True Royal/
Vintage
Heather
PMS 654 C